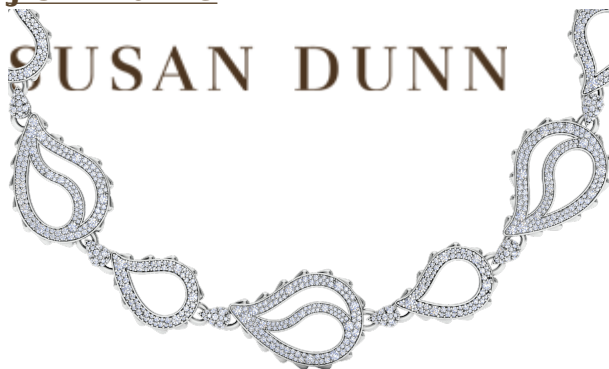




High Pave Royal Duo Necklace in 18K White Gold

J-SE-170-WG

SUSAN DUNN



The High Pave Royal Duo Necklace is available in 18K White ecological gold with Fairmined Certification. Encrusted with diamonds of the finest DEF, VVS quality, responsibly mined and impeccably cut. This stunning piece is one-of-a-kind: individually cast, handset multi-sized diamonds, meticulously hand finished and polished to perfection.

Diamonds: 9.54 carats

Stone Count: 1,620

18K Gold: ~114.4g

Measurements: 17 x .6 x .3in (432 x 15 x 9mm)

- 18K White Ecological Gold with Fairmined Certification
- Ethically sourced DEF, VVS Multi-Sized Diamonds
- Signature Lobster Catch and Loop oversized for ease of use
- Individually Cast, Hand Finished and Polished by Master Jewelers
- Presented in our custom Signature Embossed Wood Case with Signature Waterfall-Patterned Drawstring Cover
- [Jewelry Care Instructions](#)
- [Jewelry Icon Sizes](#)

